

Super Lube®



Super Lube Railroad Track and Maintenance Products Presentation

Super Lube has many products to service the Rail Industry including Rail Track Lubricant, Switch Plate Oil, Engine Refurbish Grease, Anti Corrosion and Connector Gel, and various greases and oil used in typical Rail, transportation, and Maintenance applications.

Super Lube®



Proved tracking capabilities in excess of 10 miles.

Super Lube Synthetic Railroad Track, Curve and Switch plate Grease.

- Super Lube Railroad Track and switch plate Grease is available in 5 Gallon pails packed with either 35lb net fill or 40lb net fill.
- Super Lube Railroad Track and switch plate Grease is packaged in straight side lined pails in order to maximize the output and completely evacuate the pail.
- Part Number 41035 – 35lb net weight size Super Lube Rail and switch plate Grease
- Part Number 41040 - 40lb net weight size Super Lube Rail and switch plate Grease.
- Part Number 41040SRS - 40lb net Weight size Super Lube SRS Lubricant
- **Available in various Viscosities such as NLGI 1, 2, 0, 00, 000.**

Super Lube®



Super Lube Railroad Track Grease Key Features

- Tracks Longer than any other Product of it's kind
- Non-Toxic/Biodegradable
- High Dielectric Strength
- Non Staining
- Clean/ Clear
- Prevents rust and corrosion
- Impervious to water and saltwater
- Viscosity stable
- Extends equipment life
- Reduces Maintenance
- U.S.D.A. rated H1 (NSF Approved)
- Safe in potable water
- Continuous operating temperature range (- 45° F to 450° F)



Super Lube®





Super Lube Switch plate Oil with PTFE



Super Lube Switch plate oil is a Synthetic non metallic oil containing PTFE. Super Lube Switch plate oil can be applied by brushing, pouring, or spraying. With a continuous operating temperature of -45F to 450F, there is no need to stock seasonal viscosities.

Key Features:

- Reduces application time of Graphite by 80%.
- Less Electrical Draw, Contains PTFE polymers, Dielectric.
- Environmentally Friendly, NSF Approved H1, Biodegradable, Non Toxic.
- Will not freeze or harden, -45F to 450F
- Excellent Lubricity, No solvent additives, No vapors, no VOC's
- Resists water, UV Breakdown, Will not attract dirt and dust.



Part Numbers:

58010	1 Gallon Container
58050	5 Gallon Pail
58055	55 Gallon Drum





Super Lube Switch Plate Oil

In addition to our Super Lube switch plate oil with PTFE, Synco Chemical Corporation has developed a Special Viscosity stable Switch Plate oil. Super Lube Switch plate oil can be applied by brushing, pouring, or spraying. With a continuous operating temperature of -40F to 500F, there is no need to stock seasonal viscosities. Super Lube switch plate is also compatible with Polyisoprene.

Key Features:

- Clear Translucent Formula.
- Viscosity stable . High Viscosity Index.
- Polyisoprene Compatible
- Environmentally Friendly, NSF Approved H1, Biodegradable, Non Toxic.
- Will not freeze or harden, -40F to 500F
- Excellent Lubricity, No solvent additives, No vapors, no VOC's
- Highly Resists water, UV Breakdown, Will not attract dirt and dust.
- Amtrak Approved for Extreme Conditions.



Part Numbers:

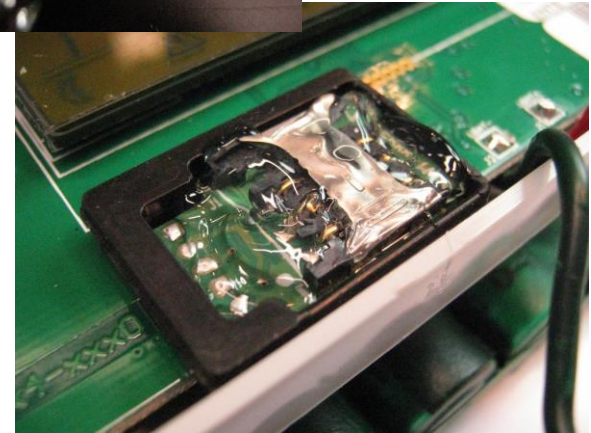
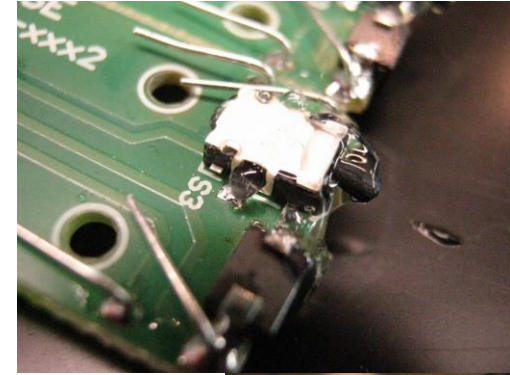
56501	1 Gallon Container
56505	5 Gallon Pail
56155	55 Gallon Drum



Super Lube®



Super Lube Anti-Corrosion and Connector Gel



Super Lube anti corrosion and connector Gel will protect all electrical contacts and Railroad Connections.

- Part Number 82003 3oz. Tool Box size
- Part Number 82016 14.1oz Benchtop Jar
- Part Number 82030 30lb Pail



Super Lube Silicone Grease for Rail Motor Refurbish

Super Lube Silicone Grease has superior Vacuum capabilities for rebuilding electrical Traction Motors used to power passenger trains. Part of the process involves varnishing the motor components with an insulating material. The varnish must be kept from coating the commutator, bolt holes, threaded fittings, bearing shafts and electrical connections.



Super Lube® Dielectric Grease is applied to these components to act as a mask. The assembly is then dipped into the coating tank where vacuum and pressure (Vacuum Pressure Impregnation Process) is applied to ensure complete coverage to the motor electrical windings. The motor is removed from the tank and the silicone grease is wiped from the protected areas, removing the unwanted varnish with it.



Refurbished Traction Motor ready to ship

Super Lube®



Super Lube Synthetic Greases and Oils for MRO Railroad Car and Facilities Maintenance

Super Lube® Multi-Purpose Synthetic Oil with Syncolon® (PTFE) (High Viscosity)



Super Lube® Synthetic Oil with Syncolon® (PTFE) is a blend of premium oils, Syncolon® (PTFE) micron sized powder and powerful additives. It provides superior lubrication protection against friction, wear, rust and corrosion. Machinery lasts longer, downtime is reduced, and productivity is increased. Super Lube® Oil with Syncolon® (PTFE) is safe on metal, rubber, plastic, wood, leather, fabric and painted surfaces.

NSF rated H1 for incidental food contact.

*Also available with UV additive for traceability

Part#	Description	Part#	Description	Part#	Description
51010	7 ml Oiler	51008	8 oz Bottle	51040	1 gallon Bottle*
51014	7 ml Oiler - bulk*	51025	1 pint Bottle	51050	5 gallon Pail*
51004	4 oz Bottle*	51030	1 quart Bottle*	51550	55 gallon Drum



Super Lube® Synthetic Lightweight Oil (Low Viscosity) ISO 68

Super Lube® Synthetic Lightweight Oil has an operating temperature of -40°F to 500°F. It is ideal for misting, dripping, spindle oil applications, and as a food-grade chain lubricant and rust inhibitor. It is an excellent electrical motor and sintered bearing lubricant.

NSF rated H1 for incidental food contact.

*Also available as Extra Lightweight Oil ISO 32

Part#	Description	Part#	Description	Part#	Description
52004	4 oz Bottle*	52030	1 quart Bottle*	52050	5 gallon Pail*
52008	8 oz Bottle*	52040	1 gallon Bottle*	52550	55 gallon Drum*
52020	1 pint Bottle*				



Super Lube® Air Tool Pneumatic Lubricant

Super Lube® Air Tool Pneumatic Lubricant is formulated to meet the special requirements of industrial, commercial, household and agricultural tools. It lubricates, absorbs water and minimizes ice buildup and frost in air tools. Blended rust and corrosion inhibitors and a synthetic base fluid oil reduce wear and allow operation of air tools at temperatures as low as -40°F.

NSF rated H1 for incidental food contact.

Part#	Description	Part#	Description	Part#	Description
12004	4 oz Bottle	12032	1 quart Bottle	12050	5 gallon Pail
12016	1 pint Bottle	12040	1 gallon Bottle	12155	55 gallon Drum



Super Lube® Synthetic Gear Oil - ISO 150, 220, 320, 460, 680

Super Lube® Synthetic Gear Oil is a clean, translucent oil with superior anti-wear and extreme pressure properties, suitable for lubricating spur, helical, herringbone, rack and pinion, straight and spiral bevel, and worm gears. Excellent oxidation resistance, rust and corrosion protection and the ability to readily separate from water, make it ideally suited for chain drives, worm gears, and gear boxes.

NSF rated H1 for incidental food contact.

Part#	Description	Part#	Description	Part#	Description
54100	1 quart Bottle (ISO 150)	54300	1 quart Bottle (ISO 320)	54632	1 quart Bottle (ISO 680)
54101	1 gallon Bottle (ISO 150)	54301	1 gallon Bottle (ISO 320)	54601	1 gallon Bottle (ISO 680)
54105	5 gallon Pail (ISO 150)	54305	5 gallon Pail (ISO 320)	54605	5 gallon Pail (ISO 680)
54155	55 gallon Drum (ISO 150)	54355	55 gallon Drum (ISO 320)	54655	55 gallon Drum (ISO 680)
54200	1 quart Bottle (ISO 220)	54432	1 quart Bottle (ISO 460)		
54201	1 gallon Bottle (ISO 220)	54401	1 gallon Bottle (ISO 460)		
54205	5 gallon Pail (ISO 220)	54405	5 gallon Pail (ISO 460)		
54255	55 gallon Drum (ISO 220)	54455	55 gallon Drum (ISO 460)		

Got a Tough Job? Bring It On!

If it slides, rolls, swivels or
squeaks, Super Lube® it!



- » Industrial
- » Agricultural
- » Fleet/Heavy Duty
- » Automotive
- » Marine
- » Recreational
- » Household



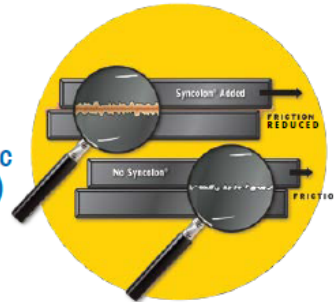
Synco Chemical Corporation
24 DaVinci Drive, Bohemia, NY 11716
1-800-253-LUBE (5823)
www.super-lube.com



Why Super Lube®?

Super Lube® is a multi-purpose, synthetic lubricant that contains Syncolon® (PTFE)

- Syncolon® (PTFE) is one of the slipperiest substances known to man.
- Super Lube® is the only product to fully suspend PTFE particles.
- Super Lube® coats the surface to create a barrier that reduces friction and wear making your equipment run smoother and longer.



Super Lube® Multi-Purpose Synthetic Grease with Syncolon® (PTFE)

Super Lube® Grease is a patented synthetic, multi-purpose lubricant with Syncolon® (PTFE). Synthetic base fluids and the addition of Syncolon® micro powders combine to form a premium lubricant that provides protection against friction, wear, rust and corrosion over a temperature range of -45°F to 450°F.

Super Lube® Grease is NLGI Grade 2, and will not run, drip, melt or separate. Compatible with most other lubricants. Outlasts conventional greases 3-4 times. NSF rated H1 for incidental food contact.

*Also available in NLGI 1, 0, 00 and 000, or with UV additive for traceability

Part#	Description	Part#	Description	Part#	Description
82340	1 oz Packet	21036	3 oz Cartridge	41030	30 lb Pail*
21006	6 oz Syringe	41150	400 gr Cartridge*	41120	120 lb Keg*
21010	1/2 oz Tube	41160	400 gr Canister*	41140	400 lb Drum*
21014	1/2 oz Tube - Bulk	41580	450 ml Bellow Cartridge*		
21030	3 oz Tube	41050	5 lb Pail*		



Super Lube® Silicone Dielectric Grease

Super Lube® Silicone Dielectric Grease is a non-curing silicone compound, clean and clear in appearance, exhibits high dielectric strength, and is ideal for sealing, protecting and insulating electrical components and connectors.

Super Lube® Silicone Dielectric Grease is waterproof, compatible with the majority of rubber and plastic compounds, and protects against moisture and other contaminants in electrical connections. NSF rated H1 for incidental food contact.

*Also available with UV additive for traceability

Part#	Description	Part#	Description	Part#	Description
91003	3 oz Tube	91016	400 gr Canister*	91030	30 lb Pail*
91015	400 gr Cartridge*	91005	5 lb Pail*	91400	400 lb Drum



Super Lube® Silicone Lubricating Grease with Syncolon® (PTFE)

Super Lube® Silicone Lubricating Grease with Syncolon® (PTFE) has a wider operating temperature range than most petroleum-based greases and is compatible with the majority of rubber and plastic compounds.

Super Lube® Silicone Lubricating Grease is ideal for lubricating O-rings and seals when the rubber compound is not known. This product will not harden, dry out or melt.

NSF rated H1 for incidental food contact.

Part#	Description	Part#	Description	Part#	Description
92000	1 oz Packet	92150	400 gr Cartridge	92005	5 lb Pail
92003	3 oz Tube	92016	400 gr Canister	92030	30 lb Pail
97008	8 oz Tube (Brake Grease)				



Super Lube® Multi-Purpose Synthetic Lubricant with Syncolon® (PTFE) (Aerosol)

Super Lube® Multi-Purpose Synthetic Lubricant with Syncolon (PTFE) is a multi-purpose lubricant, consisting of Super Lube® Grease in a solvent carrier, that cleans and penetrates the components to be lubricated, then the solvent evaporates leaving behind a film of synthetic grease which provides long lasting lubricating protection.

NSF rated H1 for incidental food contact

Part#	Description	Part#	Description
31040	6 oz Aerosol	31110	11 oz Aerosol



Super Lube® Dri-Film Lubricant with Syncolon® (PTFE) (Aerosol)

Super Lube® Dri-Film Lubricant contains Syncolon® (PTFE) in a solvent carrier that cleans and penetrates, then the solvent quickly evaporates leaving behind a dry coating of Syncolon® (PTFE) powder. The dry coating provides a low coefficient of friction which gives excellent lubrication and release properties. Super Lube® Dri-Film can be used on wood, paper, glass, rubber, fabric, leather, vinyl, metal and most plastics not under stress. It has excellent thermal and chemical stability, forming a natural insulating barrier when used on electronics.

NSF rated H1 for incidental food contact.

Part#	Description	Part#	Description
11006	5.25 oz Aerosol	11016	11 oz Aerosol



Super Lube® Syncopen® Synthetic Penetrant (Aerosol)

Super Lube® Syncopen® Synthetic Penetrant is a fast-acting, penetrating spray that cuts through rust or corrosion in those hard to reach places, to allow easy removal of rusted and corroded screws, nuts or bolts. Super Lube® Syncopen® leaves a protective film of synthetic oil to help prevent future rusting or corrosion.

NSF rated H1 for incidental food contact.

Part#	Description
85011	11 oz Aerosol



Super Lube® Silicone Lubricant (Aerosol)

Super Lube® Silicone Lubricant is a general purpose lubricant designed to prevent sticking, squeaking and binding. It is specially formulated to meet the requirements of the automotive, industrial, and agricultural industries. Super Lube® Silicone Aerosol is colorless, heat stable, and water resistant. It is safe to use on metal, glass, rubber and most plastics. The silicone base has high dielectric capabilities and protects against rust and corrosion.

NSF rated H1 for incidental food contact.

Part#	Description
91110	11 oz Aerosol



Super Lube® Super Klean

Super Lube® Super Klean Cleaner/Degreaser is an aqueous, phosphate free, industrial, multi-purpose alkaline solution formulated for cleaning and degreasing virtually any surface. Safe for use on aluminum, formica, stainless steel, rubber, concrete floors, carpets, ovens, fans, woodwork and tile. Use full strength or dilute up to 10 parts water as needed.

NSF rated A1, safe to use in and around food processing areas, where its use is not intended for direct food contact.

Part#	Description	Part#	Description	Part#	Description
10004	4 oz Bottle	10001	1 gallon Bottle	10060	55 gallon Drum
10032	1 quart Bottle	10005	5 gallon Pail		



Thank you for Choosing
Super Lube

Synco Chemical Corporation
24 DaVinci Drive Bohemia N.Y. 11716
www.super-lube.com



**Super
Lube®**

